
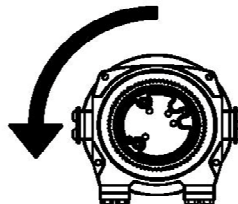
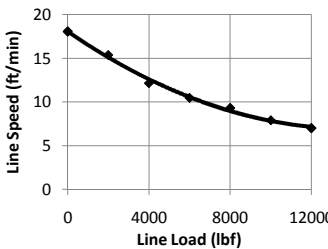
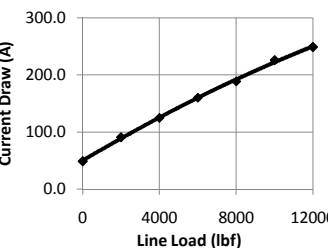
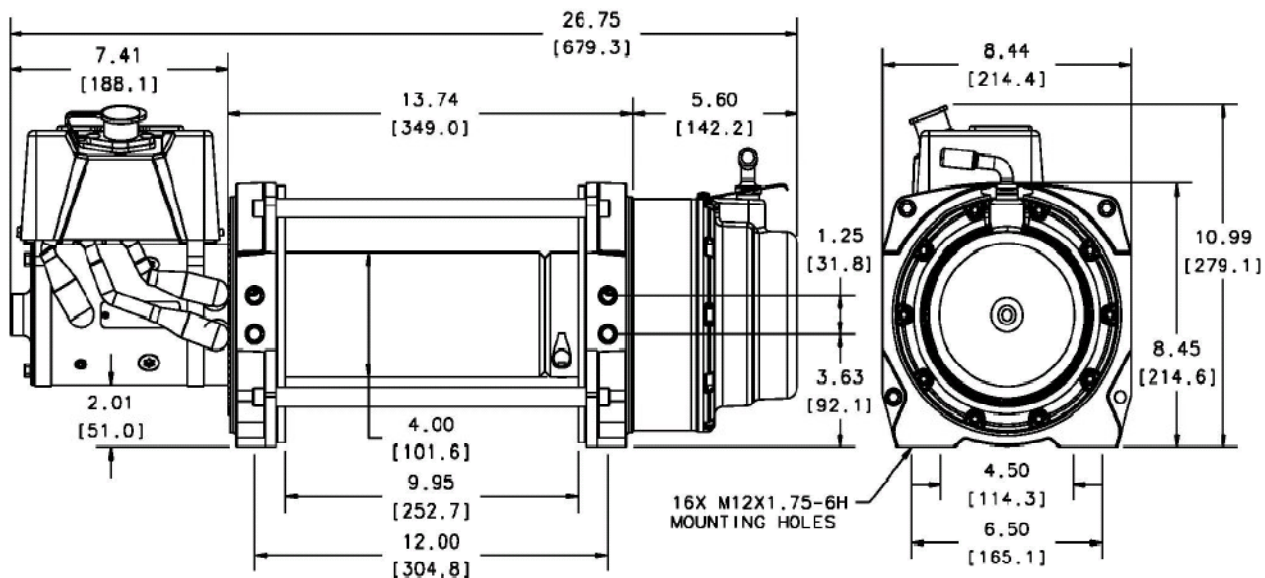
		WARN Industrial Winch		Model	Part Number	Motor Type																																				
				Series 12-A-2D Electric Winch Manual Clutch	30290	DC Electric 24 Volt Series Wound																																				
<p>The Series 12 DC features a weatherproof industrial contactor and heavy duty remote control. The disc brake is designed for extended power-out use and the motor is protected by a thermal over-load switch. Designed to meet SAE J706 and CE standards.</p> <p>*Remote Control Assembly, 10m included</p>																																										
				Accessories																																						
				Description:	Part Number																																					
				Wire Rope Tension Plate 10"	31149																																					
				Fairlead Black 10"	24336																																					
				Fairlead Chrome 10"	30859																																					
				Remote Clutch Mechanical	38316																																					
				Remote Clutch Air	71370																																					
				Wire Rope Assembly 7/16"x100' EIPS	23678																																					
Engineering Data				Drum Rotation	Standards Compliance																																					
<table><tr><td>Rated Pulling Force:</td><td>12000 lbf</td><td>5443 kgf</td></tr><tr><td>Drum Barrel Diameter:</td><td>4.0 in</td><td>102 mm</td></tr><tr><td>Drum Flange Diameter:</td><td>8.24 in</td><td>209 mm</td></tr><tr><td>Distance Between Flanges:</td><td>9.95 in</td><td>253 mm</td></tr><tr><td>Recommended Maximum Wire Rope Diameter:</td><td>1/2 in</td><td>12.7 mm</td></tr><tr><td>Recommended Minimum Wire Rope Breaking Strength:</td><td>20400 lbf</td><td>9253 kgf</td></tr><tr><td>Approximate Shipping Weight:</td><td>101.0 lb</td><td>45.8 kg</td></tr><tr><td>Duty Cycle (intermittent per SAE J706 section 6.2):</td><td>60 ft</td><td>18.3 m</td></tr><tr><td>Mounting Bolt Torque:</td><td>35 - 40 ft*lb</td><td>47 - 54 N*m</td></tr><tr><td>Maximum Layers of Wire Rope:</td><td colspan="2">4 (with 7/16" dia. rope)</td></tr><tr><td>Gear Reduction:</td><td colspan="2">261:1</td></tr><tr><td>Brake Type:</td><td colspan="2">Disk</td></tr></table>			Rated Pulling Force:	12000 lbf	5443 kgf	Drum Barrel Diameter:	4.0 in	102 mm	Drum Flange Diameter:	8.24 in	209 mm	Distance Between Flanges:	9.95 in	253 mm	Recommended Maximum Wire Rope Diameter:	1/2 in	12.7 mm	Recommended Minimum Wire Rope Breaking Strength:	20400 lbf	9253 kgf	Approximate Shipping Weight:	101.0 lb	45.8 kg	Duty Cycle (intermittent per SAE J706 section 6.2):	60 ft	18.3 m	Mounting Bolt Torque:	35 - 40 ft*lb	47 - 54 N*m	Maximum Layers of Wire Rope:	4 (with 7/16" dia. rope)		Gear Reduction:	261:1		Brake Type:	Disk				<p>1. -SAE J706 2.-CE Machinery Directive 98/37/EC and 2006/42/EC 3. -CE Electromagnetic Compatibility 2004/108/EC</p>	
Rated Pulling Force:	12000 lbf	5443 kgf																																								
Drum Barrel Diameter:	4.0 in	102 mm																																								
Drum Flange Diameter:	8.24 in	209 mm																																								
Distance Between Flanges:	9.95 in	253 mm																																								
Recommended Maximum Wire Rope Diameter:	1/2 in	12.7 mm																																								
Recommended Minimum Wire Rope Breaking Strength:	20400 lbf	9253 kgf																																								
Approximate Shipping Weight:	101.0 lb	45.8 kg																																								
Duty Cycle (intermittent per SAE J706 section 6.2):	60 ft	18.3 m																																								
Mounting Bolt Torque:	35 - 40 ft*lb	47 - 54 N*m																																								
Maximum Layers of Wire Rope:	4 (with 7/16" dia. rope)																																									
Gear Reduction:	261:1																																									
Brake Type:	Disk																																									
			Viewed from Motor End																																							
Performance By Layer- 7/16" (11.1 mm) dia. rope																																										
Drum Layer	Line Load *			No Load Line Speed		Drum Capacity																																				
	lbf	kgf	kN	ft/min	m/min	ft	m																																			
1	12000	5443	53.4	18.1	5.5	23	7.0																																			
2	10024	4547	44.6	21.6	6.6	51	15.5																																			
3	8606	3904	38.3	25.2	7.7	84	25.6																																			
4	7540	3420	33.5	28.7	8.7	121	36.9																																			
* Never exceed the Rated Pulling Force. Installation of a Rated Capacity Limiter is recommended.																																										
First Layer Performance																																										
Line Load		Current Draw	Line Speed		Duty Cycle																																					
lbf	kgf	Amps	ft/min	m/min	min/10min																																					
0	0	49.0	18.1	5.5	5.6																																					
2000	907	91.0	15.4	4.7	2.4																																					
4000	1814	125.0	12.2	3.7	1.6																																					
6000	2722	160.0	10.5	3.2	1.2																																					
8000	3629	189.0	9.3	2.8	1.0																																					
10000	4536	226.0	7.9	2.4	0.8																																					
12000	5443	249.0	7.0	2.1	0.8																																					
																																										
																																										
WARN INDUSTRIES, INC Industrial Products		Customer Service (North America): 1.800.543.9276 Customer Service (International): 1.503.722.3008 FAX: 1.503.722.3000 www.warn.com			12900 S.E. Capps Road, Clackamas, OR USA 97015																																					



WARN Industrial Winch

Model	Part Number	Motor Type
Series 12-A-2D Electric Winch Manual Clutch	30290	DC Electric 24 Volt Series Wound



Motor / Contactor may be rotated in 90 degree increments. Clutch housing may be rotated in 72 degree increments.

Units are given in inches [millimeters], unless otherwise specified

Recommended Mounting- Always Observe Correct Drum Rotation

Electrical System Specifications

Pull from bottom of winch



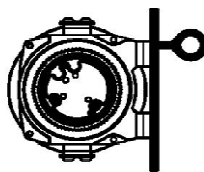
Feet down

Pull from bottom of winch



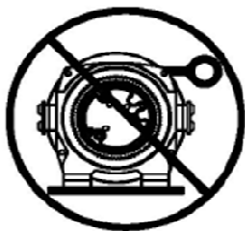
Feet forward

Pull from top of winch



Feet forward

Pull from top of winch



Feet down without angle brace

Pull from top of winch



Feet down with angle brace

Pull from top of winch



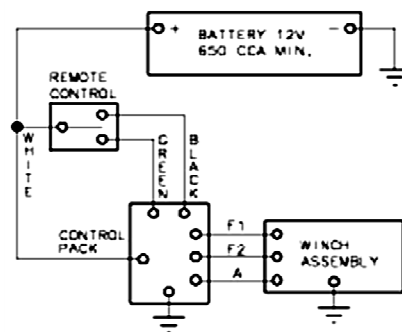
Angle Braces Only

650 CCA Battery Minimum

See Electrical Cable Gauge Size Chart for cable sizing

All electrical connections must be clean and tight

Electrical System Wiring Schematic



Notes:

WARN INDUSTRIES, INC
Industrial Products

Customer Service (North America): 1.800.543.9276
Customer Service (International): 1.503.722.3008
FAX: 1.503.722.3000 www.warn.com

12900 S.E. Capps Road,
Clackamas, OR USA 97015