



WARN Industrial Winch

Model

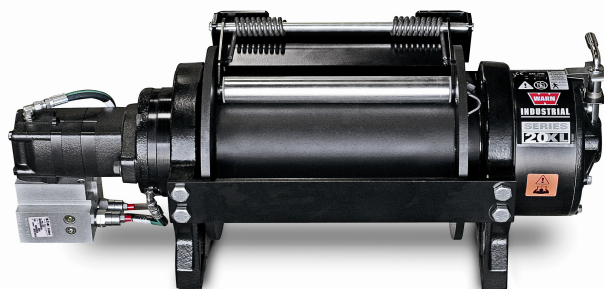
**Series 20XL
Hydraulic Winch
Manual Clutch**

Part Number

77570

Motor Type

Hydraulic
8.0 ci



The Warn Series XL product line combines durable cast iron construction, high efficiency hydraulic motor, and a robust 2X rated load braking system with a permanently lubricated and hardened 2-stage planetary gear train for superior intermittent-duty performance for loads up to 30,000 lbs. Winches are also available with manual or air clutches and 2 drum widths. A roller tension plate is standard along with bi-directional operation and a variety of mounting options to fit a variety of applications.

Warn Series XL winches are not suitable for hoisting applications or movement of persons.

Accessories

Description:

Fairlead SRS-XL-LONG

Wire Rope Assembly 9/16"x245' EIPS

Snatch Block XL-60K LB

Part Number

77869

77452

80858

Engineering Data

Rated Pulling Force:	20000	lbf	9072	kgf
Drum Barrel Diameter:	5.75	in	146	mm
Drum Flange Diameter:	12.25	in	311	mm
Distance Between Flanges:	14	in	356	mm
Recommended Maximum Wire Rope Diameter:	9/16	in	14.3	mm
Recommended Minimum Wire Rope Breaking Strength:	33600	lbf	15241	kgf
Approximate Shipping Weight:	322.0	lb	146.1	kg
Duty Cycle (intermittent per SAE J706 section 6.2):	2760	ft	84.1	m
Mounting Bolt Torque:	159	ft*lb	216	N*m
Maximum Layers of Wire Rope:	4			
Gear Reduction:	28.5:1			
Brake Type:	Spring Applied Disk			
Contactor / Remote Type:	N/A			

Drum Rotation



Viewed from Motor End

Standards Compliance

1. -SAE J706
2. -CE Machinery Directive 98/37/EC and 2006/42/EC

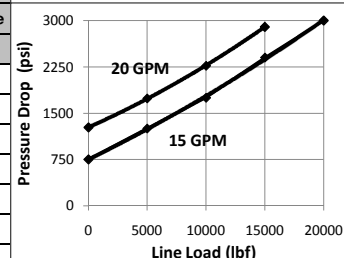
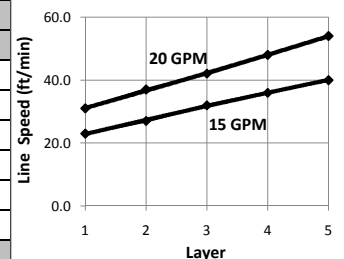
Performance By Layer- 9/16" (14.3 mm) dia. rope

Drum Layer	Line Load *			Line Speed 15 GPM		Line Speed 20 GPM		Drum Capacity	
	lbf	kgf	kN	ft/min	m/min	ft/min	m/min	ft	m
1	20000	9072	89.0	23.0	7.0	31.0	9.4	36	11.0
2	16975	7700	75.5	27.0	8.2	37.0	11.3	79	24.1
3	14745	6688	65.6	32.0	9.8	42.0	12.8	129	39.3
4	13032	5911	58.0	36.0	11.0	48.0	14.6	185	56.4
5	11676	5296	51.9	40.0	12.2	54.0	16.5	248	75.6

* Never exceed the Rated Pulling Force. Installation of a Rated Capacity Limiter is recommended.

First Layer Performance

Line Load		Pressure Drop at 15 GPM		Pressure Drop at 20 GPM		Duty Cycle
lbf	kgf	psi	BAR	psi	BAR	min/10min
0	0	750	51.7	1270	87.6	N/A
5000	2268	1250	86.2	1740	120.0	N/A
10000	4536	1750	120.7	2270	156.5	N/A
15000	6804	2400	165.5	2900	199.9	N/A
20000	9072	3000	206.8	-	-	N/A



WARN INDUSTRIES, INC
Industrial Products

Customer Service (North America): 1.800.543.9276
Customer Service (International): 1.503.722.3008
FAX: 1.503.722.3000 www.warn.com

12900 S.E. Capps Road,
Clackamas, OR USA 97015



WARN Industrial Winch

Model

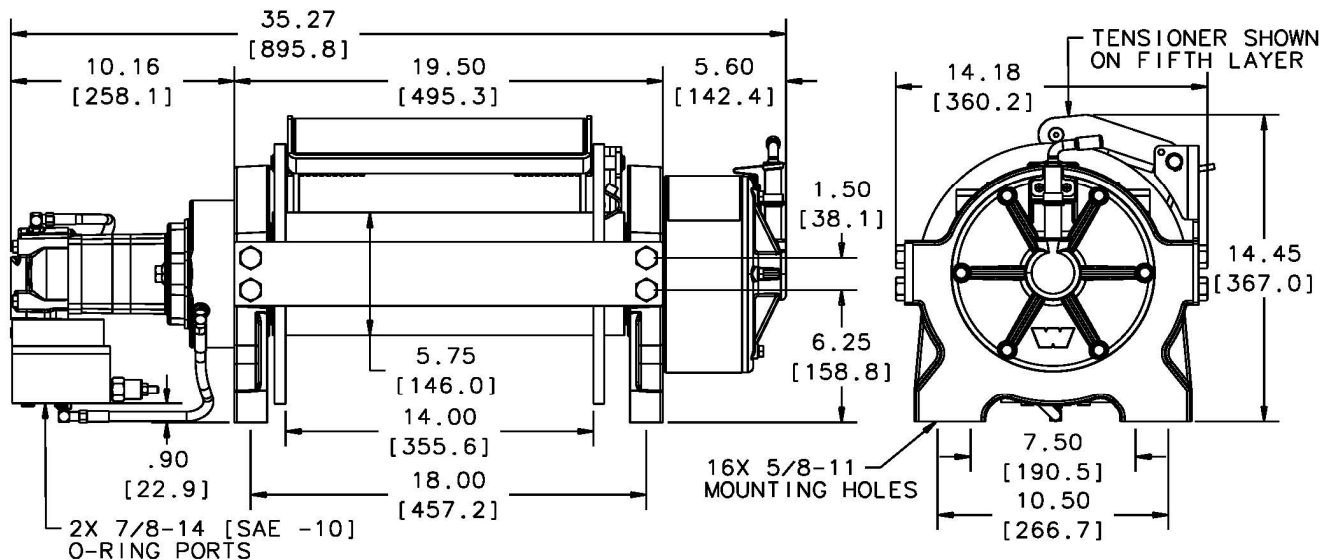
Series 20XL
Hydraulic Winch
Manual Clutch

Part Number

77570

Motor Type

Hydraulic
8.0 ci



Motor / Contactor may be rotated in 90 degree increments. Clutch housing may be rotated in 60 degree increments.

Units are given in inches [millimeters], unless otherwise specified

Recommended Mounting- Always Observe Correct Drum Rotation

Pull from bottom of winch



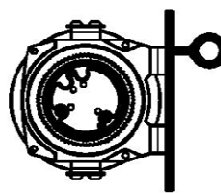
Feet down

Pull from bottom of winch



Feet forward

Pull from top of winch



Feet forward

Pull from top of winch



Feet down without angle brace

Pull from top of winch



Feet down with angle brace

Pull from top of winch

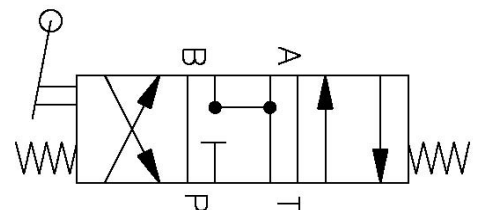


Angle Braces Only

Hydraulic System Specifications

Maximum System Pressure:	3000 psi	207 BAR
Maximum Motor Pressure Drop:	3000 psi	207 BAR
Maximum Rated Input Flow:	20 GPM	76 LPM
Control Valve Type:	3-position, 4-way, open center, spring return (motor spool)	

Control Valve Schematic



Notes:

WARN INDUSTRIES, INC
Industrial Products

Customer Service (North America): 1.800.543.9276
Customer Service (International): 1.503.722.3008
FAX: 1.503.722.3000 www.warn.com

12900 S.E. Capps Road,
Clackamas, OR USA 97015